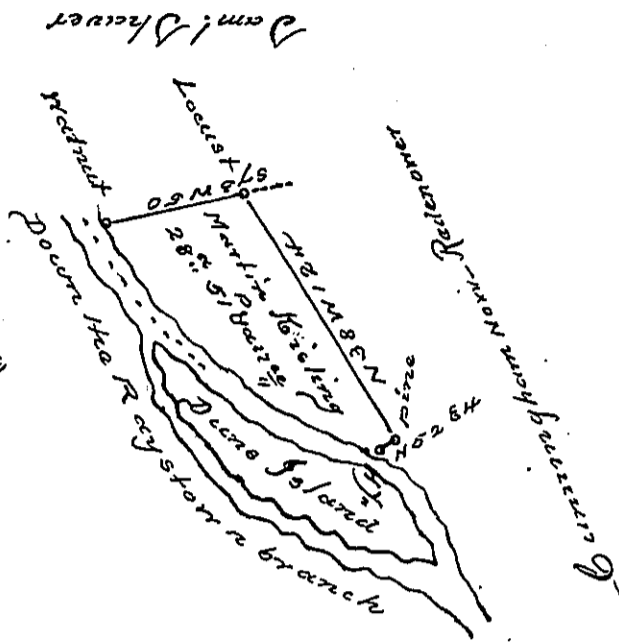


D. 16.799 (2)


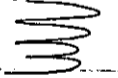


The course & distances down the River from the Walnut to the H.Y. com

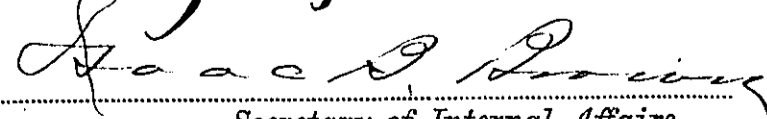
- S. 31. E. 31.1
- S. 45. E. 17
- S. 54. E. 49
- S. 69. E. 20
- S. 75. E. 26
- S. 66 1/2. E. 10.5 H.Y.
- to the H.Y. 153.6.

Situate in Porter Township, Huntingdon County, Containing twenty-eight acres & 51 perches & allowance Surveyed the 12th day of April, 1796. And resurveyed the 21st day of June 1822, in pursuance of a warrant granted to Martin Kisting dated the 12 day of January, 1791.

Dr. Wm Reed D.S.

Daniel Cochran Esq. 
 Surveyor General 

IN TESTIMONY that the above is a copy of the original remaining on file in the Department of Internal Affairs of Pennsylvania, made conformably to an Act of Assembly approved the 16th day of February, 1833, I have hereunto set my Hand and caused the Seal of said Department to be affixed at Harrisburg, this 15th day of July, 1905


 Secretary of Internal Affairs.